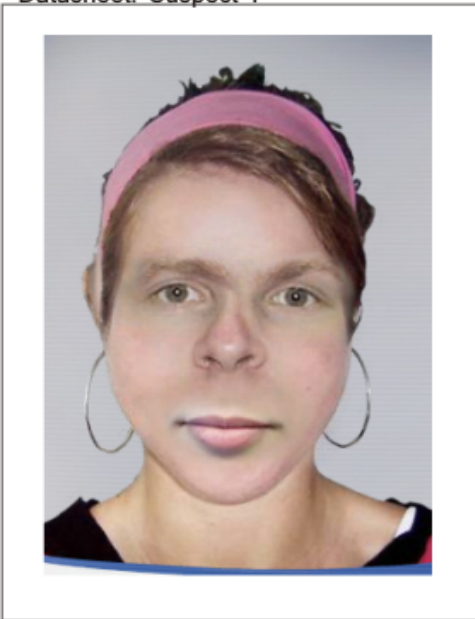


# Forensic Geology

## Case Study: People smuggling

### Datasheet: Suspect 1



Name: Ivy L. Eagle  
Age: 27  
Height: 1.27m  
Weight: 61kg  
Residence: 167, Legpull Lane  
Cheating Hill

Fingerprints: 

Other distinguishing features: mole on right shoulder

Other forensic evidence: Samples of sand taken from shoes (Sample 1).

Extract of the interview with Ms Eagle, 17/04/2003

Present DS Goodboy and DC Angel.

DSG: Where were you between the morning of 6th August 2002 and 7th August 2002?

ILE: I was on holiday on the Isle of Wight.

DSG: Can you be more specific?

ILE: I was staying at Yaverland.

DSG: Can anyone corroborate this?

ILE: No, I rented a cottage on the coast for a holiday.

DSG: What sort of holiday was that?

ILE: Bird watching.

DSG: Are you sure that you didn't visit Worthing while you were on holiday?

ILE: Quite sure.

DSG: and you have never been to Skye?

ILE: Never, I am sure about that.

DSG: What about Stourbridge?

ILE: What about Stourbridge?

DSG: Have you ever been there?

ILE: Only as a child with my parents.

The interview was suspended at 16.25.